

14.000 - 42.000 BTU



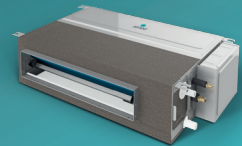
wall unit
AEOLOS



wall unit
ZEAS



cassette unit
round air flow



duct unit



ceiling and floor unit



console

MULTI SPLIT



R 32



INVERTER



Wi-Fi Ready

External multi split air conditioning units

R 32  INVERTER 



Model			SFM- 18 OU2-AU	SFM- 27 OU3-AU	SFM- 42 OU5-AU
System format			1 drives 3	1 drives 2	1 drives 5
Capacity	Cooling	Btu / h	26955 (7848~29650)	18084 (6824 - 19892)	40944 (9451~43332)
		kW	7,9 (2,3 ~ 8,69)	5,3 (2,0 - 5,83)	12 (2,77 ~ 12,7)
	Heating	Btu / h	27978 (8359~30776)	19107 (7541 - 21017)	44356 (10100~43673)
		kW	8,2 (2,45 ~ 9,02)	5,3 (2,21 - 6,16)	13 (2,96 ~ 13,1)
Electric data	Power supply	V~, Hz, Ph	220 ~ 240, 50, 1	220 ~ 240, 50, 1	220 ~ 240, 50, 1
	Cooling power input	W	2460 (560 - 3400)	1750 (280 - 2300)	4317 (750 ~ 5450)
	Heating power input	W	2210 (560 - 3400)	1500 (280 - 2300)	3750 (600 ~ 4350)
	Rated current (cooling & heating)	A	10,6 / 9,61	7,6 / 6,5	19,72 / 16,62
	Max. current	A	16,5	11	24,5
	Max. power	KW	3,8	2,3	5,6
Performance	SEER / SCOP	W / W	6.19/4.08 (F)	6,13 / 4,09 (F)	6.14/4.04 (F)
	SEER / SCOP	W / W	6.14/4.16 (J)	6,14 / 4,04 (J)	6.14/4.04 (J)
	Energy rate		A++ / A+	A++ / A+	A++ / A+
	EER / COP	W / W	3,23 / 3,71	3,23 / 3,78	2,70 / 3,47
Piping	Liquid side	mm (inch)	3 x 6,35 (1/4)	2 x 6,35 (1/4)	5 x 6,35 (1/4)
	Gas side	mm (inch)	3 x 9,52 (3/8)	2 x 9,52 (3/8)	5 x 9,52 (3/8)
Specification of Wiring	Power Wiring (ODU)	mm ²	3 x 2,5	3 x 2,5	3 x 4
	Connection Wiring (IDU & ODU)	mm ²	4 x 1,5	4 x 1,5	4 x 1,5

Model			SFM - 09ZES - AU1	SFM - 12ZES - AU1	SFM - 18ZES - AU1
Capacity	Cooling	Btu / h	9000 (4780-11260)	12285 (5800 - 12625)	17747 (8530 - 19790)
		kW	2,58 (1,40 - 3,30)	3,50 (1,70 - 3,70)	5,27 (2,50 - 5,80)
	Heating	Btu / h	9215 (4095 - 10240)	12625 (5120 - 12625)	18085 (7680 - 19790)
		kW	2,70 (1,20 - 3,00)	3,50 (1,50 - 3,70)	5,37 (2,25 - 5,80)
Electric data	Power supply	V~,Hz,Ph	220 ~ 240, 50, 1	220 ~ 240, 50, 1	220 ~ 240, 50, 1
	Cooling power input	W	40 (12 ~ 68)	40 (12 ~ 68)	63 (16 ~ 88)
	Heating power input	W	40 (12 ~ 68)	40 (12 ~ 68)	63 (16 ~ 88)
Dimension	Net dimension (W * D * H)	mm	750 x 285 x 200	750 x 285 x 200	900 x 310 x 225
	Packing dimension (W * D * H)	mm	820 x 347 x 277	820 x 347 x 277	970 x 382 x 302
Pipe diameter	Liquid side	mm (inch)	6,35 (1/4)	6,35 (1/4)	6,35 (1/4)
	Gas side	mm (inch)	9,52 (3/8)	9,52 (3/8)	12,70 (1/2)
	Drainage	mm	16,5	16,5	16,5

Model			SFM - 09DU - AU1	SFM - 12DU - AU1	SFM - 18DU - AU1
Capacity	Cooling	Btu / h	8872 (5120 - 12115)	12280 (5835 - 13135)	17400 (8530 - 19790)
		kW	2,60 (1,50 - 3,55)	3,60 (1,71 - 3,85)	5,10 (2,50 - 5,80)
	Heating	Btu / h	9895 (5800 - 12450)	13650 (6480 - 13375)	19790 (9690 - 21835)
		kW	2,90 (1,70 - 3,65)	4,00 (1,90 - 3,92)	5,80 (2,84 - 6,40)
Electric data	Power supply	V~,Hz,Ph	220 ~ 240, 50, 1	220 ~ 240, 50, 1	220 ~ 240, 50, 1
	Cooling power input	W	55	55	75
	Heating power input	W	55	55	75
Dimension	Net dimension (W * D * H)	mm	700 x 470 x 200	700 x 470 x 200	1000 x 470 x 200
	Packing dimension (W * D * H)	mm	1005 x 580 x 275	1005 x 580 x 275	1305 x 580 x 275
Pipe diameter	Liquid side	mm (inch)	6,35 (1/4)	6,35 (1/4)	6,35 (1/4)
	Gas side	mm (inch)	9,52 (3/8)	9,52 (3/8)	12,70 (1/2)
	Drainage	mm	16,5	16,5	16,5

The company reserves the right to change the technical characteristics without notice.